

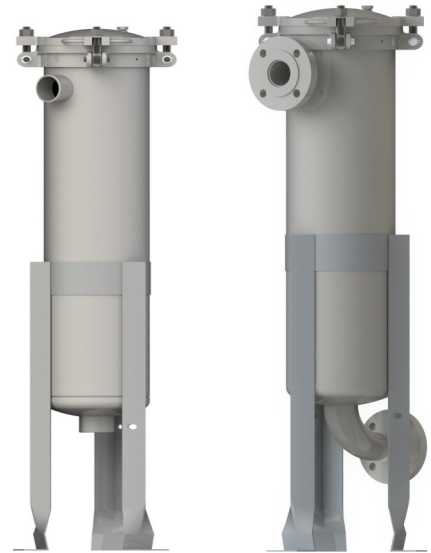
BTC

Single bag filter housing

Housing filter bag designed to remove high concentrations of solid particles present in the fluids.

BTC housing fits a wide range of filter bags; BEAFELT, BEAFINE and BEAMESH are available in different materials and filtration rating.

Swing eye bolts allow quick opening and closing of the housing for inspection and bag substitution.



Features

- Threaded and flanged inlet/outlet connections.
- Stainless steel restrainer baskets.
- Suitable for fluids of group 1 and 2 in accordance with (EC) No 1272/2008 classification

Materials

Housing: AISI 316L stainless steel
Eye-bolt closures: AISI 304 stainless steel
Gasket: Viton (standard)

Surface finishing

Inside: pickled and passivated
Outside: brushed

Design and construction

According to PED and ATEX Directives

Certification

UE Declaration of conformity and user guide.

Model	IN-OUT Connections	Bag filter size	* Flow rate MAX l/min	Weight Kg.	Volume L	Vent
BTC-F50-101-V-S	2" BSP F	01	320	26	17	1/4"
BTC-F50-102-V-S	2" BSP F	02	420	30	28	
BTC-F80-102-V-S	3" BSP F	02	650	32	28	
BTC-U50-101-V-S	DN 50-EN 1092	01	320	32	18	
BTC-U50-102-V-S	DN 50-EN 1092	02	420	36	29	
BTC-U80-102-V-S	DN 80-EN 1092	02	650	40	31	

* maximum recommended flow rate with water, pressure drop 0.1 bar

Model	Nominal dimensions (mm)					
	Fig	A	B	C	D	E
BTC-F50-101-V-S	1	845 ÷ 1095	105	540 ÷ 790	200 ÷ 450	135
BTC-F50-102-V-S		1185 ÷ 1435	105	894 ÷ 1294	200 ÷ 450	135
BTC-F80-102-V-S		1185 ÷ 1435	105	894 ÷ 1294	200 ÷ 450	135
BTC-U50-101-V-S	2	845 ÷ 1095	105	540 ÷ 790	200 ÷ 400	180
BTC-U50-102-V-S		1245 ÷ 1445	105	894 ÷ 1294	200 ÷ 400	180
BTC-U80-102-V-S		1245 ÷ 1445	105	894 ÷ 1294	200 ÷ 400	180

Selection table for ordering

Serie	IN-OUT Connections	No. of bags	Bag filter size $\varnothing \times H$	Gasket material	Finishing
BTC	F50 2" BSP F	1	01 184x419 mm	V Viton	S Inside: pickled and passivated Outside: brushed
	F80 3" BSP F		02 184x813 mm	E EPDM	
	U50 DN50 EN 1092-1				
	U80 DN80 EN 1092-1				

Example code to order

BTC - F50 - 102 - V - S

Operating limits

Fluid state	PED & ATEX Conformity		
Liquid & Gas Temp. max 120°C	Fluid group	PED Category	ATEX
10 barg	1 (dangerous) 2 (non dangerous)	Bag filter size 01 Cat.II	II 2G Ex-h IIC T4 Gb
		Bag filter size 02 Cat.III	II 2D Ex-h IIIC T135°C Db

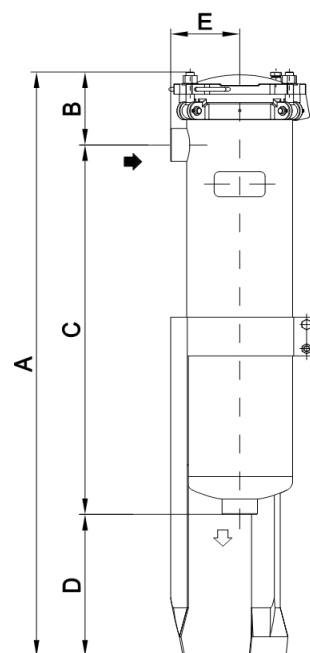


Fig.1

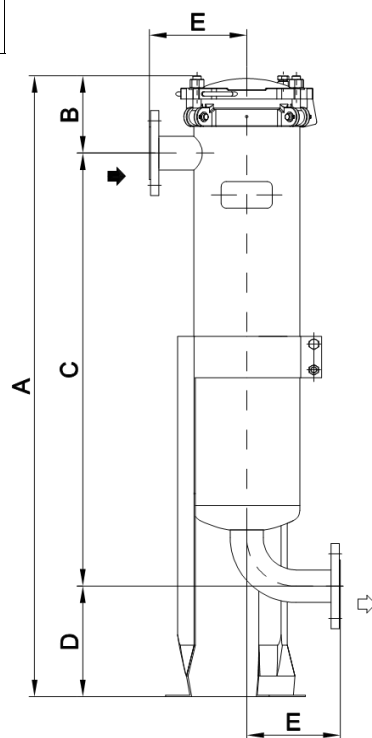


Fig.2

Bea Technologies Spa

Via Newton,4 - 20016 Pero (MILANO) Italy
Tel.+(39) 02 339271 / Fax+(39) 02 3390713
mail:info@bea-italy.com
web:www.bea-italy.com

The data are informative and subject to change without notice. User is responsible for determining whether the product is fit for particular purpose and suitable for User's method of application.