

STP-R

stainless steel housings

sanitary air /gas

STP-R sanitary housings are specifically designed to install filter elements for the filtration and sterilization of air and technical gas.

- Wide range of filter elements available
- O-Ring sealing
- Easy and safe installation
- Low pressure drops
- Sanitary tri-clamp body closure



The STP-R housing are manufactured in stainless steel with an high level of finishing, suitable for pharma and food applications. Tri-clamp closures for body and in-out connections are adopted to assure quick and easy in line installation and filter element change over.

Characteristics

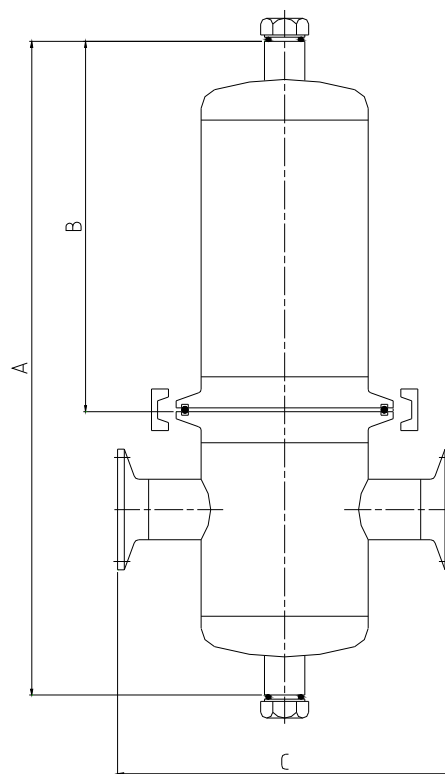
Materials
Body : stainless steel AISI 316L
Clamp : stainless steel AISI 304
Sealing : silicone FDA
Finishing
Internal : polishing 0,5 micron Ra
External : polishing 0,8 micron Ra
Manufacturing
According to PED and ATEX directives
Certification
Declaration of conformity

Selection Table

Housing	IN-OUT Connections	Drain	Vent	Filter element	Weight	Dimensions mm		
Model	Tri-Clamp	UNI-ISO 228/1	UNI-ISO 228/1	Size	Kg	A	B	C
STP-R25-01-1001	1"	1/4"	1/4"	1001	2,0	274	140	140
STP-R50-01-71	2"	1/4"	1/4"	2071	3,5	554	260	176
STP-R50-01-72	2"	1/4"	1/4"	2072	5,5	804	510	176
STP-R50-01-73	2"	1/4"	1/4"	2073	7,5	1054	877	176

Operating conditions			
Fluid	State	Max. Temp	Max. Press.
Non dangerous Group 2	Gas	0 + 90 °C	FV / 10 bar
	Steam	0 + 150 °C	FV / 6 bar

PED ed ATEX Conformity		
Housing model	PED	ATEX
STP-R25-01-1001	No "CE" mark	Gas II 2G IIC T 180 °C
STP-R50-01-71		
STP-R50-01-72	Category I	Dust II 2D T 180°C
STP-R50-01-73		



Data contained in this bulletin are informative and subject to change without notice.
User is responsible for determining whether the product is fit for particular purpose and suitable for User's method of application

DS-STP-R-610-UK-15